



## **DIOCESAN FUTURES TASK FORCE**

# **REPORT TO DIOCESAN CONVENTION**

**OCTOBER 2, 2010**

# BACKGROUND

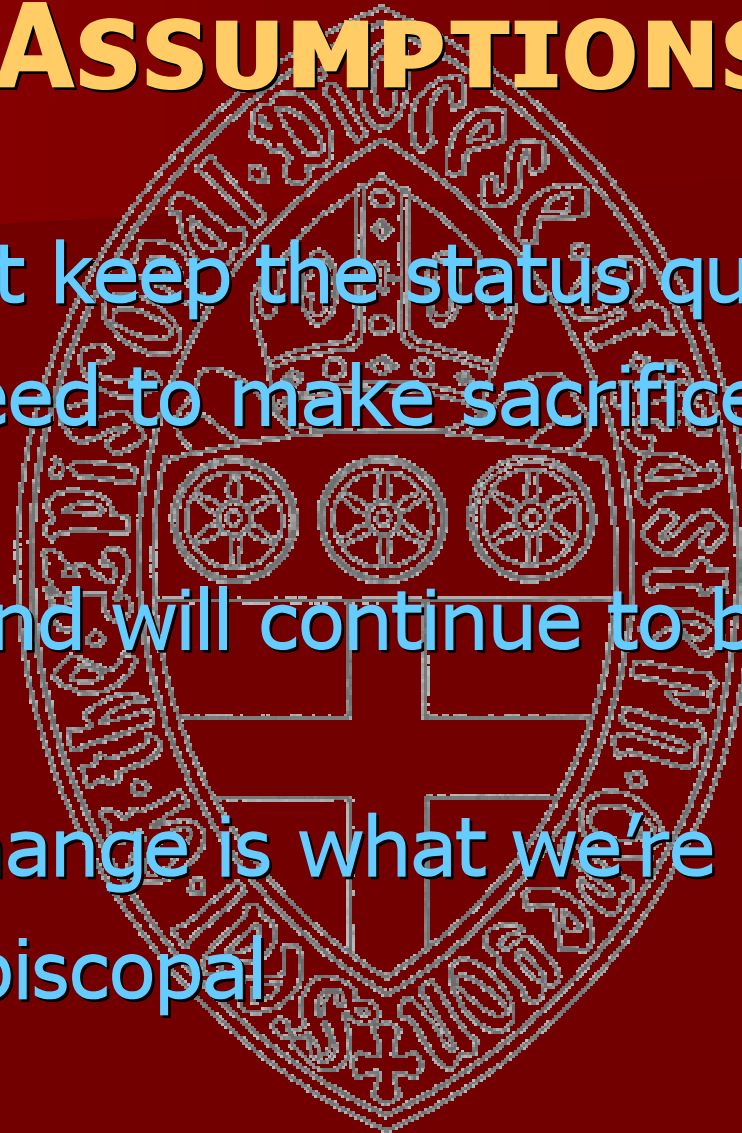
## HOW WE ARRIVED HERE

### TODAY...

- 1907 until 1970, the Episcopal Diocese of Eastern Oregon was a missionary diocese
- We became a diocese at Convention November 19, 1971
- Coalition 14 came into being in 1971
  - 25% assessment
- Domestic Missionary Partnership, 1998
- Funding has shifted within DMP and EDEO is no longer receiving general budgetary support

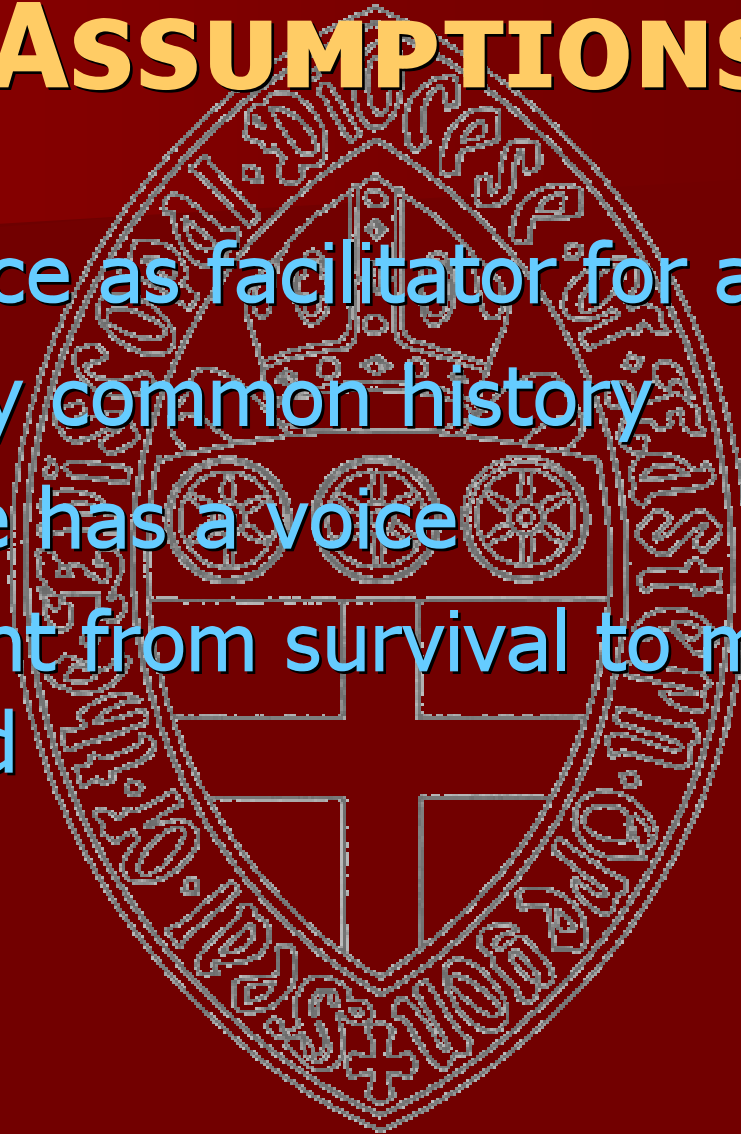
# ASSUMPTIONS

- ❖ We cannot keep the status quo
- ❖ We will need to make sacrifices from all quarters
- ❖ EDEO is and will continue to be a 'mission' diocese
- ❖ Culture change is what we're about
- ❖ We are Episcopal



# ASSUMPTIONS

- ❖ Task Force as facilitator for action
- ❖ United by common history
- ❖ Everyone has a voice
- ❖ Movement from survival to mission in the world



# THE FUNCTIONS OF *OUR* DIOCESE

## ✦ Relationships.

- ✦ Serve as a facilitator for inter-congregational relationships (resource networking).
- ✦ Serve as a facilitator for relationships within the Episcopal Church and the Anglican Communion.
- ✦ Develop and establish and ecumenical relationships for congregations and for the diocese.

## ✦ Accountability.

- ✦ Oversight of diocesan-owned properties.
- ✦ Assist in the development and implementation of local mission.
- ✦ "Branding" that we have consistency as Episcopalians.
- ✦ Training for church leaders

# FUNCTIONS...

## ✦ **Communication.**

- ✦ Providing information not otherwise available.
- ✦ Communications link between congregations.
- ✦ Ministry/formation/education through combined resources.

## ✦ **Identity through common mission.**

- ✦ Role of Bishop as shepherd, pastor for clergy and pastor for small congregations without clergy.
- ✦ Articulate Anglican theology, etc., so that we have consistency as Episcopalians.
- ✦ Mission development/implementation through combined resources.
- ✦ Stewardship.

## ✦ **Administration.**

- ✦ Management of commonly held resources so that all functions may happen.

# TASK FORCE STEPS

- ❖ Research
- ❖ Data Collation
- ❖ Test alternatives and Formulate Recommendations
- ❖ Present Recommendations



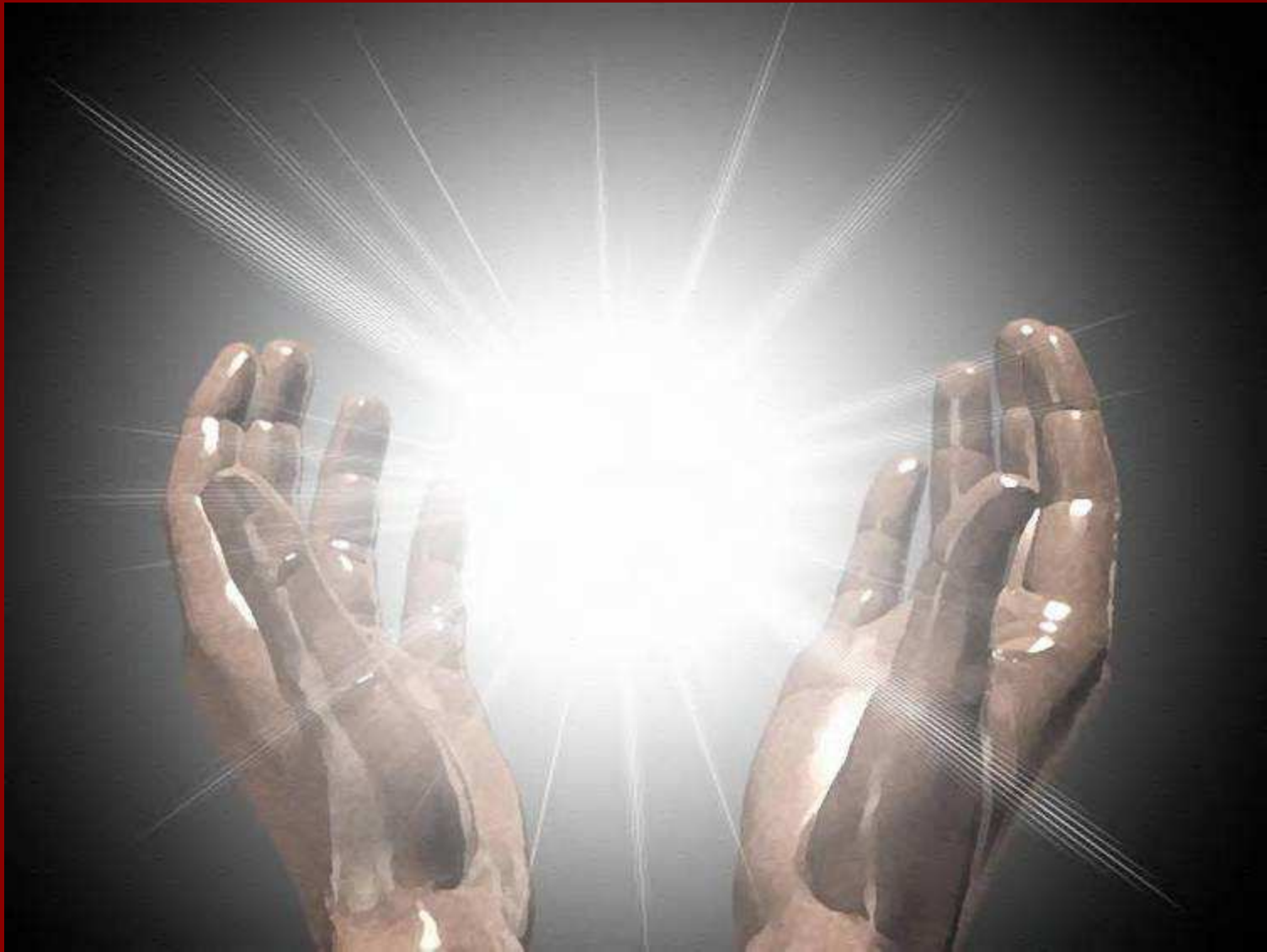
# CALENDAR

- Council Retreat, November, 2010
- Initial Recommendations to Council early in 2011
- Special Convention later in 2011



# QUESTIONS THAT REMAIN

- ⌘ To/with whom do we belong? With whom are we connected?
- ⌘ What's an appropriate "cost" of being a part of the Episcopal Church for a congregation? Whose money is it?
- ⌘ Is there will within the diocese to embrace significant change? Where is the "fire in the belly" passion for our way of living Christ in the world?
- ⌘ What is the dream for the Episcopal Church in Eastern Oregon? What will it take to make the dream come true?
- ⌘ How do/can we honor the abundance of God's gifts with limited resources? If we are to be an oasis in the high desert, what does the oasis look like?
- ⌘ How do/can we go about supporting one another in our common mission?



***CHRIST'S HANDS IN THE WORLD...***

